


# Demonstration (1)

The screenshot shows a software application window titled "flute\_testsolo01.wav - instrument". The interface includes a menu bar with "File", "Edit", and "View" options. On the left, a green waveform represents the audio signal. A central window titled "Flute" is open, displaying a photograph of a silver flute. Below the image, the text reads: "The FLUTE is a woodwind instrument. Most flutes are made of metal, usually silver; modern flutes are only occasionally made of wood. The flute is used in orchestras, wind bands, and jazz bands to give a bright, silvery sound. It is played by blowing across the blowhole. Apart from the piccolo, the flute is the only instrument in the orchestra that is played in this way." To the right of the text are buttons for "Sample Music" and "Close". On the far right of the main window are buttons for "Play", "Classify", and "Search". At the bottom, a grid of buttons lists various instruments: Flute, Guitar, Piano, Viola, Violin, Zheng, Horn, Organ, Trumpet, Cello, Erhu, and Sarod. The status bar at the bottom left shows "Ready" and the bottom right has three small empty boxes and a double-slash icon.

flute\_testsolo01.wav - instrument

File Edit View

Flute



The FLUTE is a woodwind instrument. Most flutes are made of metal, usually silver; modern flutes are only occasionally made of wood.

The flute is used in orchestras, wind bands, and jazz bands to give a bright, silvery sound. It is played by blowing across the blowhole. Apart from the piccolo, the flute is the only instrument in the orchestra that is played in this way.

Sample Music

Close

Play

Classify

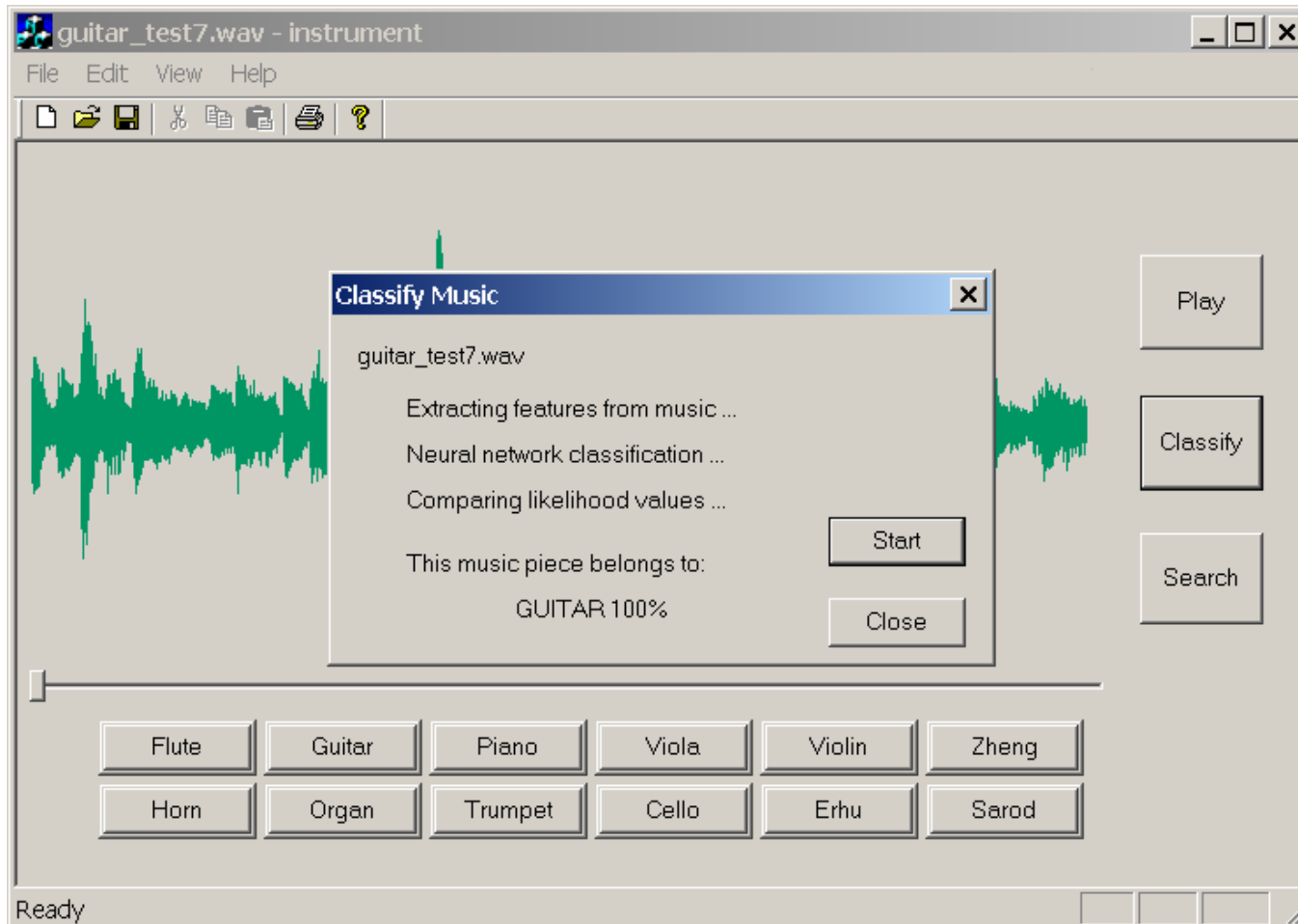
Search

Flute Guitar Piano Viola Violin Zheng

Horn Organ Trumpet Cello Erhu Sarod

Ready

# Demonstration (2)



# Demonstration (3)

